



Woodhey Lawns | Rugeley | WS15 2TE

£1,200 PCM

 **Webbs**
estate agents

Summary

Webbs Estate Agents are delighted to offer to let this four-bedroom part furnished semi-detached property situated in a desirable area of Rugeley.

The ground floor comprises a welcoming entrance hallway with stairs leading to the first floor, a comfortable lounge, and a spacious kitchen diner with patio doors opening onto the rear garden. Further benefits include a utility room and a multi-purpose room, suitable for a home office, playroom, or additional living space.

To the first floor there are four well-proportioned bedrooms and a family bathroom.

Externally, the property benefits from a driveway to the front and a spacious rear garden. Conveniently located close to local amenities, schools, and transport links.

Key Features

Rooms and Dimensions

PROPERTY DETAILS

Entrance Hallway

Living Room
16'0" x 10'4" (4.90 x 3.17)

Kitchen/Diner
10'7" x 22'6" (3.23 x 6.86)

Utility Room
7'2" x 3'2" (2.19 x 0.98)

Study
9'6" x 6'9" (2.92 x 2.06)

Bedroom
11'4" x 8'5" (3.46 x 2.58)

Bedroom
13'3" x 8'5" (4.05 x 2.59)

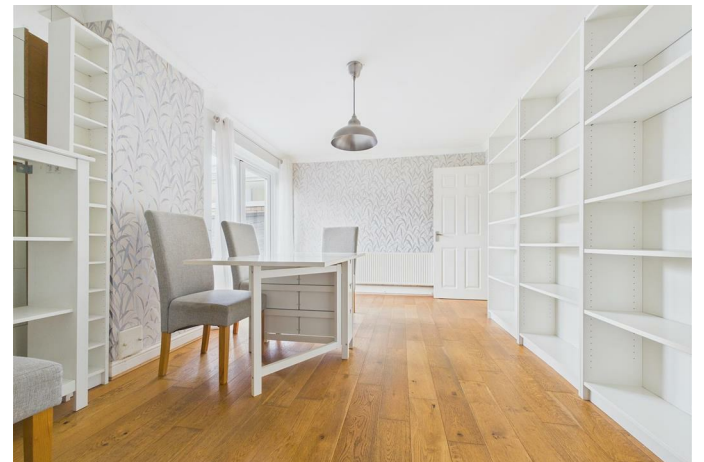
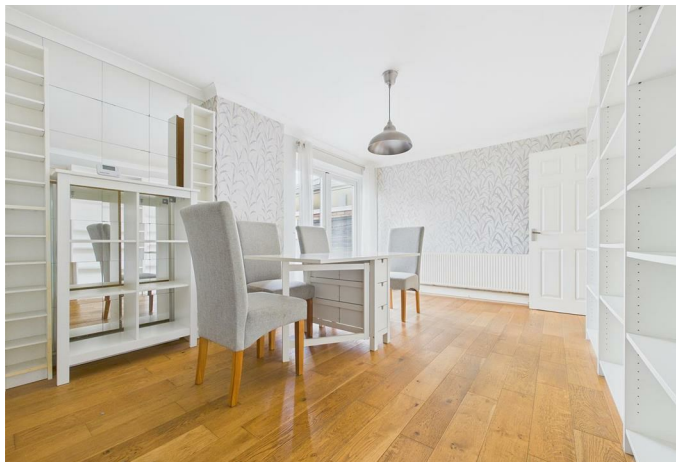
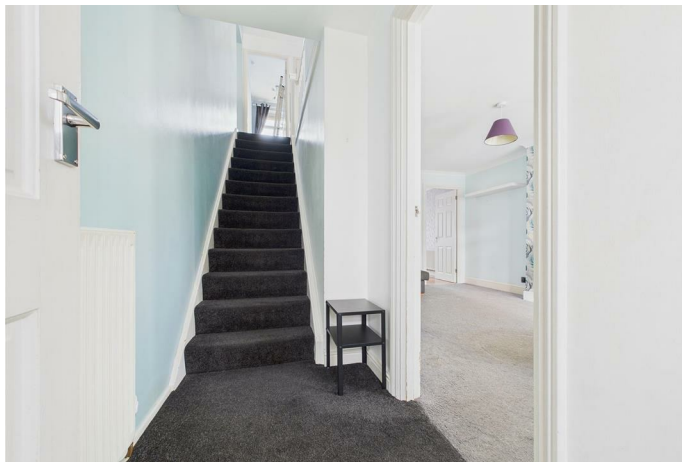
Bedroom
8'6" x 14'0" (2.61 x 4.28)

Bedroom
6'3" x 5'11" (1.91 x 1.82)

Bathroom
11'10" x 6'11" (3.63 x 2.13)

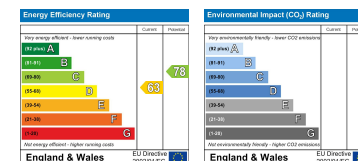
Please Note







Webbs Estate Agents - endeavour to maintain accurate depictions of properties in Virtual Tours, Floor Plans and descriptions, however, these are intended only as a guide and purchasers must satisfy themselves by personal inspection.



153 Avon Road, Cannock, WS11 1LF

Tel: 01543 468846 | Email: sales@webbsestateagents.co.uk | www.webbestateagents.co.uk